

Product Description

MEK1(N382H)

Catalog Number: 26270

Gene Symbol: MAP2K1; MAPKK1; MEK1; MKK1; PRKMK1

Description: Anti-MEK1(N382H) Mouse Monoclonal Antibody

Background: MEK1 (also known as extracellular signal-regulated kinases, ERKs) plays important role in the MAP kinase cascade, which transduces multiple extracellular signals to control cell growth, proliferation and differentiation. Activated upon growth factors stimulation, MEK1 phosphorylates MAPK3/ERK1 and MAPK1/ERK2, thus activates the MAP pathway and regulates transcription. Abnormal of the MEK1 protein, including point mutations, are implicated in diseases such as cardiofaciocutaneous syndrome (CFC) and melanoma.

Immunogen: A synthetic peptide from the internal region of MEK1, which includes the mutation of N382H, human origin.

Tested Applications: ELISA, WB, IF, IHC

Recommended Dilutions:

ELISA:	1:1000-1:2000
WB:	1:500-1:1000
IF:	1:50-1:100
IHC:	1:50-1:100

Concentration: 1.0 mg/ml

Host: Mouse

Clonality: Monoclonal

Isotype: IgG

Purity: Purified from ascites

Format: Liquid

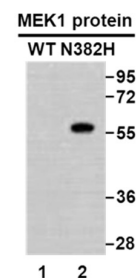
Preservative: No

Constituents: PBS (without Mg²⁺ and Ca²⁺), pH7.4, 150 mM NaCl, 50% glycerol

Species Reactivity: Recognizes MEK1(N382H), but not wild type MEK1 protein from vertebrates.

Storage Conditions: Store at -20°C. Avoid repeated freezing and thawing

Western blot:



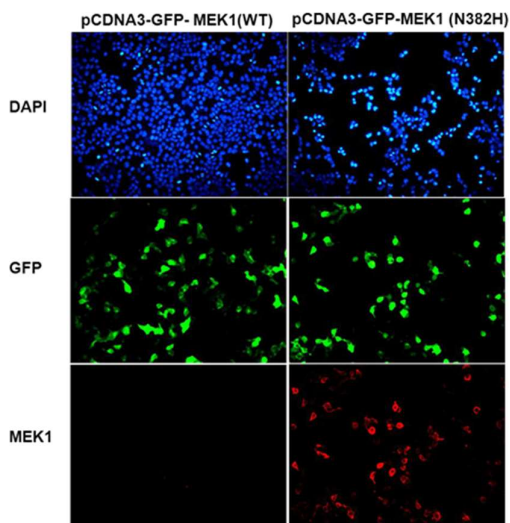
WB: Anti- MEK1 (N382H) mAb

Western blot analysis of recombinant MEK1 (N382H) and wild type proteins.

HEK293T cells were transfected with pCDNA3-GFP-MEK1 (WT) plasmid (left column) or pCDNA3-GFP-MEK1 (N382H) plasmid (right column), then fixed and stained with anti-MEK1 (N382H) monoclonal antibody (Cat. #26270).

FOR RESEARCH USE ONLY. NOT FOR DIAGNOSTIC APPLICATIONS

Immunofluorescence:



Immunofluorescence of cells expressing MEK1 proteins with anti-MEK1 (N382H) antibody.

HEK293T cells were transfected with pCDNA3-GFP-MEK1 (WT) plasmid (left column) or pCDNA3-GFP-MEK1 (N382H) plasmid (right column), then fixed and stained with anti-MEK1 (N382H) monoclonal antibody (Cat. # 26270).

FOR RESEARCH USE ONLY. NOT FOR DIAGNOSTIC APPLICATIONS